

NO EVIDENCE OF INTRINSIC OPTICAL/NEAR-INFRARED LINEAR POLARIZATION FOR V404 CYGNI DURING ITS BRIGHT OUTBURST IN 2015: BROADBAND MODELING AND CONSTRAINT ON JET PARAMETERS

Y. T. TANAKA¹, R. ITOH², M. UEMURA¹, Y. INOUE³, C. C. CHEUNG⁴, M. WATANABE⁵, K. S. KAWABATA¹, Y. FUKAZAWA¹, Y. YATSU⁶, T. YOSHI⁶, Y. TACHIBANA⁶, T. FUJIWARA⁶, Y. SAITO⁶, N. KAWAI⁶, M. KIMURA⁷, K. ISOGAI⁷, T. KATO⁷, M. AKITAYA¹, M. KAWABATA², T. NAKAOKA², K. SHIKI², K. TAKAKI², M. YOSHIDA¹, M. IMAI⁵, S. GOUDA⁵, Y. GOUDA⁵, H. AKIMOTO⁸, S. HONDA⁸, K. HOSOYA⁸, A. IKEBE⁸, K. MORIHANA⁸, T. OHSHIMA⁸, Y. TAKAGI⁸, J. TAKAHASHI⁸, K. WATANABE⁸, D. KURODA⁹, T. MOROKUMA¹⁰, K. MURATA¹¹, T. NAGAYAMA¹², D. NOGAMI⁷, Y. OASA¹³, K. SEKIGUCHI¹⁴

Submitted to ApJ (January 5, 2016)

ABSTRACT

We present simultaneous optical and near-infrared (NIR) polarimetric results for the black hole binary V404 Cyg spanning the duration of its 7-day long optically-brightest phase of its 2015 June outburst. The simultaneous R and K_s -band light curves showed almost the same temporal variation except for the isolated (~ 30 min duration) orphan K_s -band flare observed at MJD 57193.54. We did not find any significant temporal variation of polarization degree (PD) and position angle (PA) in both R and K_s bands throughout our observations, including the duration of the orphan NIR flare. We show that the observed PD and PA are predominantly interstellar in origin by comparing the V404 Cyg polarimetric results with those of the surrounding sources within the $7' \times 7'$ field-of-view. The low intrinsic PD (less than a few percent) implies that the optical and NIR emissions are dominated by either disk or optically-thick synchrotron emission, or both. We also present the broadband spectra of V404 Cyg during the orphan NIR flare and a relatively faint and steady state by including quasi-simultaneous *Swift*/XRT and *INTEGRAL* fluxes. By adopting a single-zone synchrotron plus inverse-Compton model as widely used in modeling of blazars, we constrained the parameters of a putative jet. Because the jet synchrotron component cannot exceed the *Swift*/XRT disk/corona flux, the cutoff Lorentz factor in the electron energy distribution is constrained to be $< 10^2$, suggesting particle acceleration is less efficient in this microquasar jet outburst compared to AGN jets. We also suggest that the loading of the baryon component inside the jet is inevitable based on energetic arguments.

Keywords: polarization — binaries: general — radiation mechanisms: non-thermal — stars: jets — infrared: stars — stars: individual (V404 Cyg)

1. INTRODUCTION

A relativistic collimated outflow (known as a jet) emerging from a black hole (BH) is ubiquitously observed in various spatial scales from stellar mass ($\sim 10M_\odot$) to supermassive

($\sim 10^8 - 10^{10}M_\odot$) BHs. Polarimetry in the optical and near-infrared (NIR) bands is a powerful method to unveil the emission mechanism and investigate the magnetic field structure inside the jet (e.g., Marscher et al. 2008). In Active Galactic Nuclei (AGN) and Gamma-Ray Burst (GRB) jets, it is well accepted that the optical and NIR lights are produced by high-energy electrons through optically-thin synchrotron emission. High degrees of linear polarization in the optical/NIR band observed from AGN and GRB jets ($\sim 10\%$ up to 30–40%; see e.g., Ikejiri et al. 2011; Uehara et al. 2012) indicate that the synchrotron process is operating, with highly ordered magnetic fields in the emission regions. Measurements of polarization position angle (PA) are also useful to determine the magnetic field direction at the emission region. In addition, the detection of a polarization PA swing may manifest from the presence of a helical magnetic field along a jet or curved structure indicating the global jet geometry (e.g. Marscher et al. 2008; Abdo et al. 2010).

It is also known that the jet emission in stellar-mass BHs appear in the NIR band. While emission in the optical-band is dominated by the accretion disk, the NIR emission often shows excess with respect to the Rayleigh-Jeans tail of the disk blackbody component. Hence, if the NIR emission is due to *optically-thin* synchrotron emission, high polarization degree (PD) is theoretically expected. However, reliable optical/NIR polarimetric measurements for Galactic BH binary jets are still very limited mainly due to the difficulty in eliminating the interstellar polarization caused by large amounts of dust clouds in our Galaxy in the target directions. Another reason for the paucity of intrinsic polarization measure-

ytanaka@hep01.hepl.hiroshima-u.ac.jp

¹ Hiroshima Astrophysical Science Center, Hiroshima University, 1-3-1 Kagamiyama, Higashi-Hiroshima 739-8526, Japan

² Department of Physical Sciences, Hiroshima University, Higashi-Hiroshima, Hiroshima 739-8526, Japan

³ Institute of Space and Astronautical Science, JAXA, 3-1-1 Yoshinodai, Chuo-ku, Sagami-hara, Kanagawa 252-5210, Japan

⁴ Space Science Division, Naval Research Laboratory, Washington, DC 20375-5352, USA

⁵ Department of CosmoSciences, Graduate School of Science, Hokkaido University, Kita 10, Nishi 8, Kita-ku, Sapporo, Hokkaido 060-0810, Japan

⁶ Department of Physics, Tokyo Institute of Technology, 2-12-1, Ohokayama, Tokyo, Japan

⁷ Department of Astronomy, Kyoto University, Kitashirakawa Oiwake-cho, Sakyo-ku, Kyoto, Kyoto 606-8502, Japan

⁸ Center for Astronomy, University of Hyogo, 407-2 Nishigaichi, Sayo, Hyogo 679-5313, Japan

⁹ Okayama Astrophysical Observatory, National Astronomical Observatory of Japan, Asakuchi, Okayama 719-0232, Japan

¹⁰ Institute of Astronomy, Graduate School of Science, The University of Tokyo, Mitaka, Tokyo 181-0015, Japan

¹¹ Graduate School of Science, Nagoya University, Furo-cho, Chikusa-ku, Nagoya 464-8602, Japan

¹² Graduate School of Science and Engineering, Kagoshima University, Kagoshima 890-0065, Japan

¹³ Faculty of Education, Saitama University, Sakura, Saitama 338-8570, Japan

¹⁴ National Astronomical Observatory of Japan, Mitaka, Tokyo 181-8588, Japan

ments is that the objects are often not sufficiently bright to perform polarimetry. In this regard, we note that clear NIR polarization was detected from Cyg X-2 and Sco X-1 based on spectro-polarimetry (Shahbaz et al. 2008).

An opportunity to study the BH binary jet through optical/NIR polarimetry was presented when V404 Cygni (a.k.a., GS 2023+338; hereafter V404 Cyg) produced an exceptionally bright outburst in June 2015. This object is one of the famous low-mass X-ray binaries (LMXBs) because a similar huge outburst was detected in 1989 with intensive multi-wavelength observations performed at that time (e.g., Makino 1989). The distance is accurately determined as 2.39 ± 0.14 kpc from parallax measurement using astrometric VLBI observations (Miller-Jones et al. 2009). In this paper, in order to study the non-thermal jet emission and constrain the physical parameters in the microquasar jet, we present results of linear polarization measurements in the optical and NIR bands for V404 Cyg during the brightest outburst in June 2015 performed by *Kanata* 1.5 m and *Pirka* 1.6 m telescopes in Japan. Observations and data reductions are described in §2. We show the results in §3, and the implications of our findings are presented in §4.

2. OBSERVATIONS AND DATA REDUCTIONS

2.1. *Kanata*/HONIR

We performed simultaneous optical and NIR imaging polarimetry for V404 Cyg using the Hiroshima Optical and Near IR camera (HONIR; Akitaya et al. 2014) mounted on the *Kanata* 1.5-m telescope in Higashi-Hiroshima, Japan. The data presented here were taken on MJD 57193 and 57194. The HONIR polarization measurements utilize a rotatable half-wave plate and a Wollaston prism. We selected R_C and K_s bands as the two simultaneous observing filters. To study the wavelength dependence of polarization properties for the target, we also took $VR_{C_I}JHK_s$ imaging polarimetric data on MJD 57194.50–57194.55 (the “C” subscripts are herein suppressed). Each observation consisted of a set of four exposures at half-wave plate position angles of 0° , $22^\circ 5'$, 45° , and $67^\circ 5'$. Typical exposures in each frame were 30 s and 15 s for the R - and K_s -bands, respectively, but these exposures were sometimes modified depending on weather conditions (decreased when seeing became good, and increased when cirrus clouds passed over the target). VI - and JH -band exposures on MJD 57194 were 30 s and 15 s, respectively.

To calibrate these data, we observed standard stars on MJD 57195 there are known to be unpolarized (HD 154892) and strongly-polarized (HD 154445 and HD 155197; Turnshek et al. 1990; Wolff et al. 1996). We thereby confirmed that the instrumental PD is less than 0.2% and determined the instrumental polarization PA against the celestial coordinate grid. Absolute flux calibration, which is needed to construct the optical and NIR SEDs, was performed by observing standard stars on photometric nights MJD 57200.

2.2. *Pirka*/MSI

We also performed optical R -band imaging polarimetry monitoring for V404 Cyg using the Multi-Spectral Imager (MSI; Watanabe et al. 2012) mounted on the 1.6-m *Pirka* telescope located in Hokkaido, Japan, from MJD 57190–57193. The MSI observations were performed in a similar manner to the *Kanata*/HONIR ones, namely the MSI utilizes a rotatable half-wave plate and a Wollaston prism, and a series of four exposures were taken for each polarization measurement. The

typical exposure time of each frame was 15 s. To remove the instrumental polarization ($p = 0.78\%$) and to calibrate the polarization PA, we used past MSI data of the two unpolarized stars (BD+32 3739 and HD 212311; Schmidt et al. 1992) and three strongly-polarized stars (HD 154445, HD 155197, and HD 204827; Schmidt et al. 1992) obtained on MJD 57167 and 57169. We also confirmed the polarization efficiency of $\sim 99.7\%$ using a polarizer and flat-field lamp.

2.3. *Swift*/XRT

We analyzed X-ray data for V404 Cyg taken with XRT onboard the *Swift* satellite using HEASoft version 6.16. The *Swift*/XRT data analyzed here were taken on MJD 57193 and 57194 (observation IDs: 00031403040 and 00031403046), which were almost simultaneous with the *Kanata*/HONIR multi-band photo-polarimetry data. Clean events of grade 0–12 within the source rectangle region (because the observation was in window-timing mode) were selected. After subtracting background counts selected from both sides of the source with rectangle shapes, the 0.5–10 keV events were utilized for spectroscopy. We generated ancillary response files with the `xrtmkarf` tool. Using XSPEC version 12.8.2, we roughly fit the data by assuming a disk blackbody plus power-law model both of which were modulated by Galactic absorption (i.e., `wabs*(diskbb+pow)`) and converted the spectra to νF_ν fluxes.

3. RESULTS

Fig. 1 (*top* panel) shows the V -band light curve of V404 Cyg during the bright outburst (Kimura et al. 2015) after the detection of burst-like activities by *Swift*/BAT, *Fermi*/GBM, and *MAXI*/GSC on 2015 June 15 (MJD 57188) (Negoro et al. 2015; Kuulkers et al. 2015). The optical flux increased by ~ 7 mag compared to the quiescent level ($V = 18.6$ mag, Wagner et al. 1991) at a maximum around MJD 57194 and the highest flux level continued for about one week. During this brightest phase, the source showed large-amplitude (as much as 3 mag) and short-time variability. Fig. 1 (two *bottom* panels) illustrate intra-night variations of the R - and K_s -band fluxes, polarization degrees (PDs), and polarization position angles (PAs) measured by *Kanata*/HONIR and *Pirka*/MSI on MJD 57193 and 57194 (corresponding to 2015 June 19 and 20). Note that the *Kanata*/HONIR R - and K_s -band photometric and polarimetric observations are strictly simultaneous. On MJD 57193, the HONIR observations were interrupted by cloudy weather and stopped around MJD 57193.64, while *Pirka*/MSI continuously obtained R -band photometric and polarimetric data over ~ 5 hours.

On the whole, the simultaneous R - and K_s -band light curves showed similar temporal variations. However, around MJD 57193.54, a flux increase is evident only in the K_s band, while no corresponding enhancement was observed in the R -band. During this NIR flare, the K_s -band PD and PA did not show any significant variation despite the pronounced flux change. The K_s -band PD and PA were constant at $1.4 \pm 0.1\%$ and $9^\circ 1' \pm 2''$, respectively, throughout the HONIR observations that night. That same night, the R -band light curve showed a rapid and large-amplitude decrease around MJD 57193.64 and then gradually recovered. During the optical dip, the PD and PA were constant and did not show any significant variations. Similarly, the R -band PDs and PAs measured by *Pirka*/MSI on this night remained constant at $7.77 \pm 0.01\%$ and $6^\circ 19' \pm 0'' 03$, respectively. Note that there is a small discrepancy between the *Pirka*/MSI and

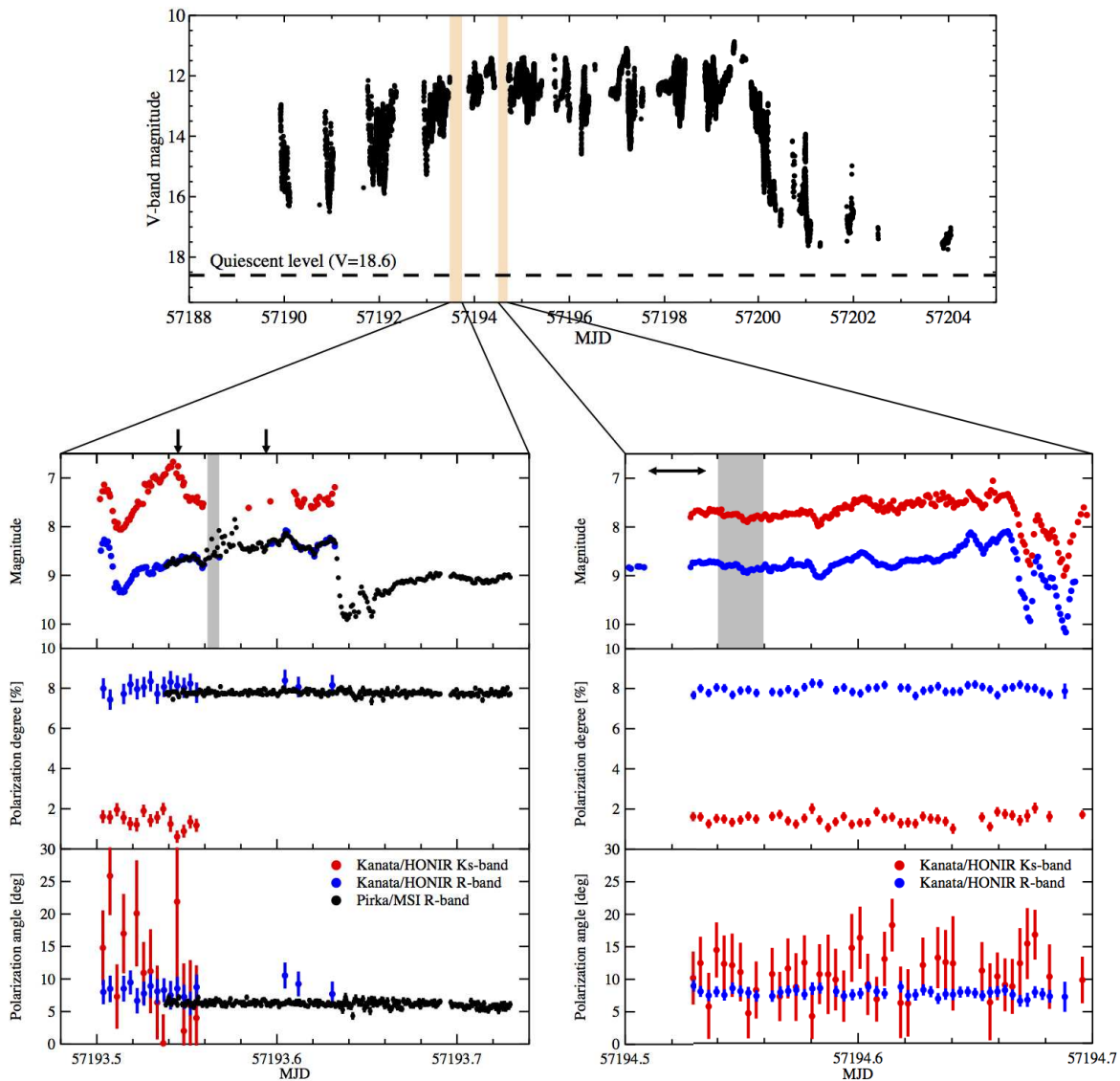


Figure 1. *Top:* V-band light curve of V404 Cyg during the most active phase in 2015 June (taken from Kimura et al. (2015)). The hatched orange rectangles indicate the *Kanata*/HONIR observation periods. Horizontal dashed line indicates the quiescent flux level of $V = 18.6$ (Wagner et al. 1991). *Bottom left:* *Kanata*/HONIR and *Pirka*/MSI polarimetric observations in MJD 57193. Note that the R-band magnitudes shown in the first panel are offset by 3.0 mag for illustrative purpose, hence the actual R-band magnitudes are fainter by 3.0 mag. The two black arrows and gray rectangle in the first panel indicate the dates when *Kanata*/HONIR *VRIJHK_s* and *Swift*/XRT X-ray spectra were constructed, respectively (see also left panels in Fig. 4 and Fig. 5). *Bottom right:* Same as bottom left panel, but for the data in MJD 57194. A black horizontal arrow shows the period when *Kanata*/HONIR multiband polarimetric observations were performed (see also Fig. 3 as well as right panels in Fig. 4 and Fig. 5).

Kanata/HONIR R-band polarimetric results (see Table 1). This could be due to a lack of cross-calibration but our subsequent discussion is unaffected by this small difference.

On the next night, the observing conditions were relatively good until MJD 57194.7 and we obtained ~ 4.5 -hours of continuous, simultaneous R- and K_s -band photometric and polarimetric data for V404 Cyg. As shown in Fig. 1 (*bottom-right* panel), the HONIR photometric light curves in R- and K_s bands exhibited quite similar temporal profiles, including the two ‘dips’ around MJD 57194.68. The PDs and PAs in both bands were again constant over the ~ 4.5 -hour duration, even over the course of the two dips. In addition, the PDs and PAs in each band were completely the same as those measured on the previous night (MJD 57193). We note the sporadic lack of K_s -band polarimetric data points (namely, PD and PA) after MJD 57194.64 due to the passage of cirrus clouds (NIR

observations are more heavily affected by clouds compared to the optical).

Finally, we note that in addition to the photo-polarimetric data presented here we also obtained *Pirka*/MSI R-band data on MJD 57190, 57191, and 57192. As shown in Table 1, these data showed that the polarization parameters of the object remained constant at $PD = 7.7 - 7.9\%$ and $PA = 6^\circ.2 - 6^\circ.6$ during the exposures despite violent variability of the total flux of ~ 2.0 mag.

To investigate the polarization properties of the region of the sky in the direction of V404 Cyg, we also analyzed *Kanata*/HONIR R-band data taken on MJD 57194 (because the observing condition was much better compared to MJD 57193) and determined the PDs and PAs for the brightest field stars within the HONIR field-of-view. The result is displayed in Fig. 2. We found that the PAs of not only

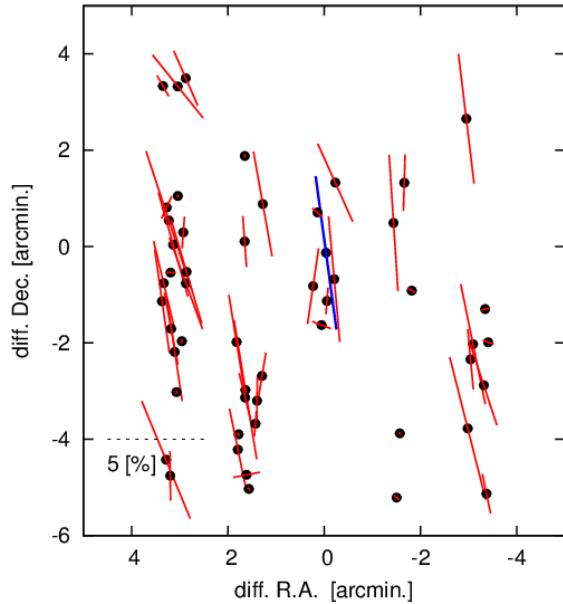


Figure 2. R -band polarization degrees and position angles of surrounding sources around V404 Cyg within the *Kanata*/HONIR field-of-view ($7' \times 7'$). The center filled circle indicates V404 Cyg, whose PD and PA are shown by a blue line.

V404 Cyg, but also the surrounding objects, showed almost the same direction. Moreover, the measured PDs are also at similar levels. These findings clearly indicate that, despite the relatively large PD of $\sim 7.8\%$ for V404 Cyg, local dust clouds located between V404 Cyg and the Earth are the likely cause of the polarized emission in this sky direction and about half of the surrounding objects (including V404 Cyg) are located beyond the dust cloud. This suggests the PD and PA for V404 Cyg is *not* intrinsic *but* interstellar origin. The hypothesis is supported by the non-variable and constant PDs and PAs for V404 Cyg even during the large flux variations (see two bottom panels in Fig. 1). Furthermore, we show the $VRIJHK_s$ -band PDs and PAs of V404 Cyg in Fig. 3 indicating a steep PD decrease toward the infrared band with constant PAs over the six observation bands. This polarization behavior is similar to that of a highly reddened star, suggesting that the polarization is interstellar origin. From these observational results, we consider that the measured polarization of V404 Cyg is predominantly contaminated by interstellar dust between the object and us. The low intrinsic PD (less than a few percent) implies that the optical and NIR emissions are dominated by either disk or optically-thick synchrotron emission, or both.

4. DISCUSSION

The simultaneous *Kanata*/HONIR R - and K_s -band light curves showed almost the same temporal evolution, except the orphan K_s -band flare which peaked around MJD 57193.54 and lasted for ~ 30 mins (see Fig. 1). Apart from this orphan flare (which is discussed in detail later), the quite similar R - and K_s -band light curves naturally leads to an interpretation that the NIR and optical emissions come from the same component (or have the same origin). There are two possible options to explain the optical and NIR emissions: one is a disk origin and the other is from a jet. To gauge which is the most plausible, we constructed a broadband spectrum of V404 Cyg from the radio to X-ray bands in ν - F_ν representation (Fig.4). Note that the radio fluxes are not si-

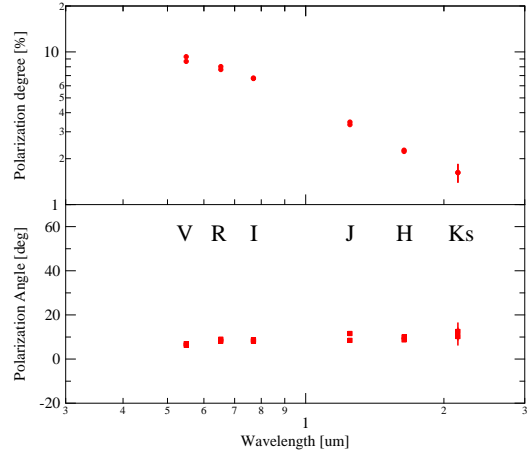


Figure 3. Nearly simultaneous $VRIJHK_s$ -band polarization degrees and position angles of V404 Cyg, observed with HONIR from MJD 57194.51–57194.54.

multaneous, while the *Kanata* and *Swift*/XRT data were obtained within a one-hour timespan. The *Kanata* optical and NIR fluxes were dereddened by assuming $A_V = 4.0$ and 5.1 , and also $R_V = 3.1$. The former A_V value was derived by Casares et al. (1993) from the spectral type of companion star and $B-V$ colors, while the latter $A_V = 5.1$ was estimated from Galactic dust maps¹⁵ and Schlafly & Finkbeiner (2011). For an $A_V = 4.0$ correction, we found a slightly rising but almost flat ($\alpha \sim 0$) shape in the optical and NIR spectrum. This implies optically-thick synchrotron emission from an outer jet. Indeed, an extrapolation of the $\sim 2-20$ GHz radio spectra (although not strictly simultaneous) by assuming a $F_\nu \propto \nu^{0.2}$ spectrum smoothly connected to the part of the spectrum measured with *Kanata*/HONIR (see Fig 4). On the other hand, if the $A_V = 5.1$ value is utilized for the extinction-correction, the optical/NIR spectrum shows a clear rising shape with $\alpha \sim 1.0$ and does not connect to the radio fluxes, which would favor the disk origin interpretation. Although the Rayleigh-Jeans tail of the blackbody spectrum is expressed as $F_\nu \propto \nu^{2.0}$, the measured value of 1.0 would be due to the peak of the blackbody radiation. No evidence of intrinsic linear polarization in the R - and K_s -bands are allowed in both scenarios because both optically-thick synchrotron and blackbody radiation only generate weak linear polarization of order $\lesssim 10\%$. Hence, depending on the assumed A_V value adopted, a different origin of the optical and NIR emissions is inferred.

Here, we focus on the orphan K_s -band flare which lasted for only ~ 30 mins at MJD 57193.54. The observed red color and short duration imply a most plausible origin of the flare was synchrotron emission from a jet. Indeed, the K_s -band peak flux of the flare reached ~ 2.5 Jy, which has the same level measured during the giant radio and sub-mm flares observed by RATAN-600 and SMA (Sub Millimeter Array) on MJD 57198.933 and MJD 57195.55 (Trushkin et al. 2015a; Tetarenko et al. 2015), respectively. As shown in Fig. 4 (left panel), an extrapolation of the radio spectrum observed during the giant flare at GHz-frequencies on MJD 57198.933 nicely connects to the K_s -band peak flux by assuming a flat spectral shape (i.e., $F_\nu \propto \nu^0$). More interestingly, even during the orphan flare, the K_s -band PD remains steady and does not show any significant temporal variation indicating that the

¹⁵ <http://irsa.ipac.caltech.edu/applications/DUST/>

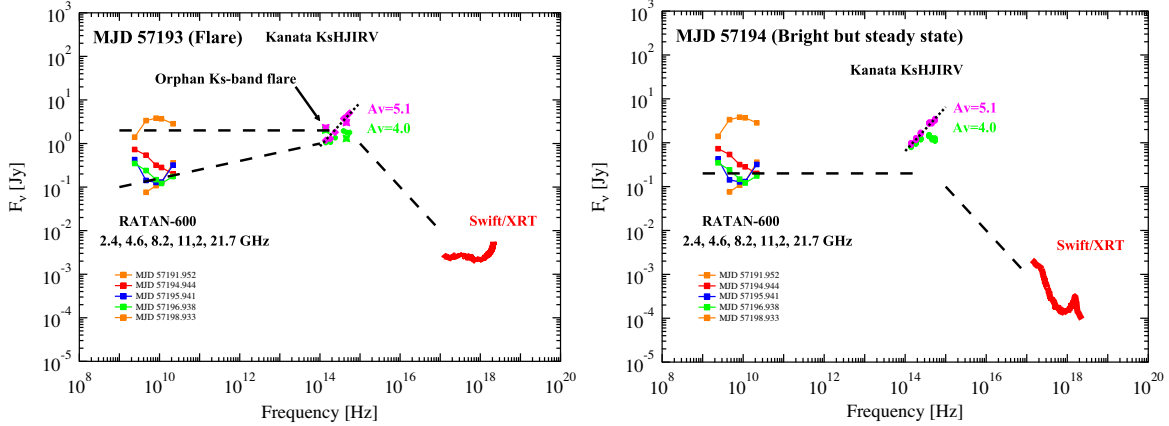


Figure 4. *Left:* Quasi-simultaneous (within 1 hour) $\nu - F_\nu$ plotted measurements of V404 Cyg observed by *Kanata/HONIR* and *Swift/XRT* on MJD 57193. The stars in K_s - and R -bands indicate the simultaneous fluxes measured during the orphan K_s -band flare. Also shown are non-simultaneous 2.3 to 21.7 GHz RATAN-600 preliminary fluxes (Trushkin et al. 2015b). Three dashed lines illustrate the spectral shape of index $\alpha = -1, 0,$ and 0.2 ($F_\nu \propto \nu^\alpha$) while the dotted line shows the $F_\nu \propto \nu^1$ spectrum. Note that these lines are for illustrative purposes only. *Right:* Same as the *left* panel, but for the *Kanata/HONIR* and *Swift/XRT* data taken on MJD 57194.

NIR emission is not strongly polarized. This result would be reasonably understood if the jet synchrotron emission is still in the optically-thick regime even in the K_s band. We therefore conjecture that this orphan K_s -band flare is produced by optically-thick synchrotron emission from an outer jet. If the optically-thick synchrotron emission extends up to the R -band with a flat shape and the baseline R -band flux is not as high as the flaring component of ~ 2.5 Jy (as corrected by assuming $A_V = 4.0$), it significantly contributes to the R -band flux as well, making the flare visible also in the R -band light curve. In contrast, if the intrinsic baseline R -band flux is higher than the flaring component (as corrected by assuming $A_V = 5.1$), the contribution of the flaring component would be small. A spectral break between the K_s and R bands of the flaring emission component caused by the transition of synchrotron emission from optically-thick to optically-thin regimes, if present, would make the contribution negligible, as observed. From this argument, it would be plausible that the optical and NIR emissions are dominated by the disk emission having a blackbody-like spectral index of $\alpha \sim 1.0$ and that $A_V = 5.1$, or at least higher than 4.0, is favored. We also showed the quasi-simultaneous F_ν *Kanata/HONIR* and *Swift/XRT* spectra measured on MJD 57195.52, together with the RATAN-600 non-simultaneous radio fluxes. The radio, optical/NIR, and X-ray spectra would be reasonably understood by optically-thick synchrotron emission from the outer jet, disk emission, and disk plus corona emissions, respectively.

To constrain the jet parameters and physical quantities in the emission region, we attempted to model the spectral energy distribution (SED) of V404 Cyg by using a one-zone synchrotron plus synchrotron self-Compton (SSC) model (Finke et al. 2008), which is widely used for blazar SED modeling (e.g., Abdo et al. 2009, 2011; Tanaka et al. 2014, 2015). We show in Fig. 5 (*left* panel) the quasi-simultaneous broadband SED of V404 Cyg during the K_s -band flare. This modeling assumes that a single emission region located at the inner-most part of the jet. Hence, the optically-thick synchrotron emission from an outer jet, which has a flat spectrum of $F_\nu \propto \nu^0$ observed in the radio up to NIR band is not modeled, while the optically-thin synchrotron and SSC emissions above the optical band are fit-

ted. However, in the current case, we now know that the optical and X-ray emission are from a disk and disk plus corona, respectively. We therefore regard the *Kanata/HONIR*, *Swift/XRT*, and *INTEGRAL* data points (taken from Fig. 3 of Rodriguez et al. (2015)) as upper limits for the jet emission. Another constraint comes from the *Kanata/HONIR* observation that the K_s -band emission is not significantly polarized even during the orphan flare. This indicates that K_s -band emission is still in the optically-thick regime and that the break frequency (defined as ν_{SSA} , where SSA means synchrotron self absorption) of the synchrotron emission from optically-thick to optically-thin regime is above the K_s band, $\nu_{SSA} \gtrsim 1.4 \times 10^{14}$ Hz. Hence, we here assume that $\nu_{SSA} = 3.0 \times 10^{14}$ Hz. We also assume that the synchrotron peak flux is 2 Jy as observed by *Kanata/HONIR* (and also by RATAN-600 on MJD 57198.933). We can then infer the magnetic field B and the size of the emission region R by using standard synchrotron formulae (e.g., Rybicki & Lightman 1979; Chaty et al. 2011; Shidatsu et al. 2011) as $B \sim 1 \times 10^5$ G and $R \sim 5 \times 10^8$ cm. The electron energy distribution is assumed to have a single power-law shape with exponential cutoff as $dN/d\gamma = K\gamma^{-s} \exp(-\gamma/\gamma_{cut})$ for $\gamma_{min} \leq \gamma \leq \gamma_{max}$, where γ is the electron Lorentz factor, K is the electron normalization, s is the power-law index, γ_{cut} is the cutoff energy, γ_{min} and γ_{max} are the minimum and maximum electron energies and are respectively set to 1 and 10^6 . The jet inclination angle of V404 Cyg is estimated as $\sim 55^\circ$ (e.g., Shahbaz et al. 1994; Khargharia et al. 2010) and assuming a jet velocity of $0.9c$, the corresponding Doppler beaming factor is $\delta = [\Gamma(1 - \beta \cos\theta)]^{-1} \sim 0.9$. We can therefore safely neglect relativistic beaming effects.

By changing the parameters of the electron energy distribution, we calculated the resultant synchrotron and SSC emissions. The calculated model curves are shown in Fig. 5 (*left* panel) and all the model parameters are tabulated in Table 2. The derived parameters for the electron energy distribution are $K = 4.5 \times 10^{40}$, $s = 2.2$, and $\gamma_{cut} = 10^2$. Importantly, the *Swift/XRT* data allowed us to constrain the cutoff energy as 10^2 because larger γ_{cut} violates these upper limits in the soft X-ray band. This implies that particle acceleration in this microquasar jet is not very efficient. The electron energy distribution cutoff energy is determined by

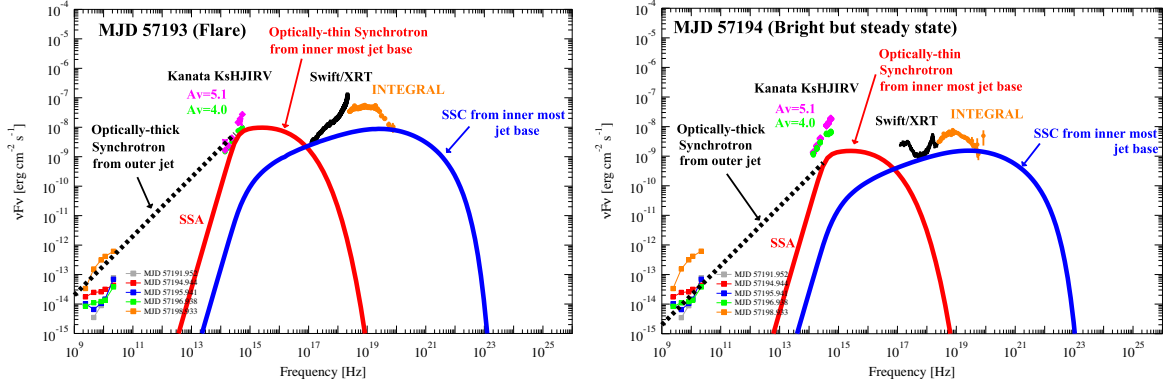


Figure 5. *Left:* Broadband spectrum of V404 Cyg in $\nu - \nu F_\nu$ representation. The *Kanata/HONIR* and *Swift/XRT* fluxes were quasi-simultaneously observed on MJD 57193, while *RATAN-600* and *INTEGRAL* data were not simultaneous. One-zone synchrotron and SSC emissions are also drawn by solid red and blue lines, respectively. Black dashed line indicates the optically-thick synchrotron emission from an outer jet, with a spectral shape of $F_\nu \propto \nu^0$. *Right:* Same as the left panel, but for the quasi-simultaneous *Kanata/HONIR* and *Swift/XRT* fluxes observed on MJD 57194.

the balance between acceleration and cooling times, where the acceleration time is defined as $t_{\text{acc}} = \eta E / (eBc)$ by using an electron energy E and parameter η , the number of gyrations an electron makes while doubling its energy (e.g., Finke et al. 2008; Murase et al. 2014). Since dominant cooling processes for electrons of $\gamma = \gamma_{\text{cut}} = 10^2$ are both synchrotron and SSC, the cooling time is estimated as $t_{\text{cool}} = 3\gamma m_e c / (8\sigma_T \gamma^2 (U_B + U_{\text{sync}}))$. Thus, we obtain $\eta \sim 10^6$ by setting $E = \gamma_{\text{cut}} m_e c^2$ and $B = 10^5$ G. This is much larger than $\eta \sim 10$ in blazar jets (e.g., Rachen & Mészáros 1998), indicating much longer acceleration times and inefficient acceleration in this microquasar jet.

Note that the electron power-law index of 2.2 we obtained from SED modeling has already been modified by rapid synchrotron and SSC cooling. In the current situation, because the magnetic field is strong ($B \sim 1 \times 10^5$ G) and emission region is small ($R \sim 5 \times 10^8$ cm), we need to consider the following three energy loss processes, adiabatic cooling (this is also equivalent to particle escape from emission region), synchrotron cooling, and SSC cooling. Note here that we can neglect synchrotron cooling for electrons of $\gamma \lesssim 40$ because the optically-thick regime is below $\nu_{\text{SSA}} = 3 \times 10^{14} (\gamma/40)^2 (B/10^5 \text{ G})$ Hz. Cooling timescales for these processes are estimated as $t_{\text{ad}} \gtrsim R/c \sim 1.7 \times 10^{-2} (R/5 \times 10^8 \text{ cm})$ and $t_{\text{SSC}} \sim 5.1 \times 10^{-2} \gamma^{-1} (U_{\text{ph}}/3 \times 10^8 \text{ erg cm}^{-3})^{-1}$, respectively. Therefore, high-energy electrons of $\gamma \gtrsim 3$ rapidly lose their energy via SSC emission and hence the electron power-law index becomes steeper by one power of E , if injection of high-energy emitting electrons continued over a few tens of minutes (which corresponds to the flare duration observed by *Kanata/HONIR*). Namely, the electron energy distribution at $\gamma \gtrsim 3$ is already in a fast-cooling regime, which indicates that the original (or injected) electron power-law index is 1.2. This is much smaller than the standard power-law index of 2.0 derived by the first-order Fermi acceleration theory (e.g., Blandford & Ostriker 1978).

We can now derive the total energy in electrons and magnetic field as $W_e = \int_{\gamma_{\text{min}}}^{\gamma_{\text{max}}} d\gamma \gamma dN/d\gamma = 9.9 \times 10^{34}$ erg and $W_B = 4.7 \times 10^{35}$ erg, respectively, thus the jet is Poynting-flux dominated by a factor of ~ 5 . The jet power in electrons (L_e) and magnetic field (L_B) is calculated as $L_i = 2\pi R^2 \beta c U_i$ ($i = e, B$), where U_e and U_B are the electron and magnetic field energy

densities, respectively, $\beta = 0.9$ is assumed, and the factor of 2 is due to the assumption of a two-sided jet. Then, we obtain $L_e = 3.9 \times 10^{36}$ erg s $^{-1}$ and $L_B = 1.9 \times 10^{37}$ erg s $^{-1}$, and the total jet power $P_{\text{jet}} = L_e + L_B = 2.3 \times 10^{37}$ erg s $^{-1}$. On the other hand, we can also calculate the total radiated power using the SED modeling result as $L_{\text{rad}} = L_{\text{sync}} + L_{\text{SSC}} = 7.0 \times 10^{37}$ erg s $^{-1}$, which is larger than the summed $L_e + L_B = 2.3 \times 10^{37}$ erg s $^{-1}$. This indicates that the Poynting flux and L_e is not sufficient to explain L_{rad} and another form of power is required. The simplest and most probable solution is to assume that the jet contains enough protons which have larger power than L_{rad} (e.g., Sikora & Madejski 2000; Ghisellini et al. 2014; Tanaka et al. 2015; Saito et al. 2015). This is another (though indirect) evidence of a baryon component in a microquasar jet. Note that we reached the above conclusion based on jet energetics argument, but the baryonic jet in a microquasar has already been claimed by a different, independent method based on the detection of blue-shifted emission lines in the X-ray spectra for SS 433 and 4U 1630–47 (Kotani et al. 1994; Díaz Trigo et al. 2013).

During the moderate and steady state on MJD 57194, there were no observational constraints on ν_{SSA} due to dominance of disk component in the optical and NIR bands, hence we assume that break frequency remains the same as that during bright flare as $\nu_{\text{SSA}} = 3.0 \times 10^{14}$ Hz. We estimated the synchrotron peak flux as 0.2 Jy, because such a flux level was observed in the GHz band during the high state (Trushkin et al. 2015a) and an extrapolation to the NIR band with a flat shape ($\alpha = 0$) seems reasonable. We thereby obtained the following estimates of $B \sim 1 \times 10^5$ G and $R \sim 2 \times 10^8$ cm. Important information about the non-thermal jet emission, which should be included in the SED modeling, comes from the *INTEGRAL* detection of an additional power-law component of $\Gamma = 1.54^{+0.24}_{-0.45}$ in the hard X-ray band (Rodríguez et al. 2015). The *Kanata/HONIR*, *Swift/XRT*, and *INTEGRAL* (exponential cutoff power-law component dominant up to ~ 100 keV) data points are treated as upper limits. Based on these assumptions and the multi-wavelength data, we calculated the broadband non-thermal jet emission by accelerated electrons using the one-zone synchrotron and SSC model. The result is shown by solid lines in Fig. 5 (*right* panel) and the model parameters are tabulated in Table 2. We obtained the same parameter values of $s = 2.2$ and $\gamma_{\text{cut}} = 10^2$ for the electron energy distribution, but the electron normalization $K = 7.0 \times 10^{39}$ is

smaller due to the fainter jet flux, as was observed in the radio band. We also found $W_B/W_e \sim 2$, suggesting again the jet is slightly Poynting-flux dominated. More interestingly, the total radiated power is again larger than the summed electron and magnetic field powers in the jet, implying the presence of a baryonic component even during the fainter state.

We thank Dr. Trushkin and Dr. Rodriguez for providing us with their RATAN-600 and *INTEGRAL* data, respectively. This work is supported by the Optical & Near-Infrared Astronomy Inter-University Cooperation Program, and the MEXT of Japan. We acknowledge with thanks the variable star observations from the AAVSO International Database contributed by observers worldwide and used in this research. YTT is supported by Kakenhi 15K17652. MU is supported by Kakenhi 25120007. CCC is supported at NRL by NASA DPR S-15633-Y. MW is supported by Kakenhi 25707007.

REFERENCES

- Abdo, A. A., Ackermann, M., Ajello, M., et al. 2009, *ApJ*, 707, 55
—, 2010, *Nature*, 463, 919
—, 2011, *ApJ*, 736, 131
- Akitaya, H., Moritani, Y., Ui, T., et al. 2014, in *Society of Photo-Optical Instrumentation Engineers (SPIE) Conference Series*, Vol. 9147, 4
- Blandford, R. D., & Ostriker, J. P. 1978, *ApJ*, 221, L29
- Casares, J., Charles, P. A., Naylor, T., & Pavlenko, E. P. 1993, *MNRAS*, 265, 834
- Chaty, S., Dubus, G., & Raichoor, A. 2011, *A&A*, 529, A3
- Díaz Trigo, M., Miller-Jones, J. C. A., Migliari, S., Broderick, J. W., & Tzioumis, T. 2013, *Nature*, 504, 260
- Finke, J. D., Dermer, C. D., & Böttcher, M. 2008, *ApJ*, 686, 181
- Ghisellini, G., Tavecchio, F., Maraschi, L., Celotti, A., & Sbarato, T. 2014, *Nature*, 515, 376
- Ikejiri, Y., Uemura, M., Sasada, M., et al. 2011, *PASJ*, 63, 639
- Kimura, et al. in preparation
- Khargharia, J., Froning, C. S., & Robinson, E. L. 2010, *ApJ*, 716, 1105
- Kotani, T., Kawai, N., Aoki, T., et al. 1994, *PASJ*, 46, L147
- Kuulkers, E., Motta, S., Kajava, J., et al. 2015, *The Astronomer's Telegram*, 7647, 1
- Makino, F. 1989, *IAU Circ.*, 4782
- Marscher, A. P., Jorstad, S. G., D'Arcangelo, F. D., et al. 2008, *Nature*, 452, 966
- Miller-Jones, J. C. A., Jonker, P. G., Dhawan, V., et al. 2009, *ApJ*, 706, L230
- Murase, K., Inoue, Y., & Dermer, C. D. 2014, *Phys. Rev. D*, 90, 023007
- Negoro, H., Matsumitsu, T., Mihara, T., et al. 2015, *The Astronomer's Telegram*, 7646, 1
- Rachen, J. P., & Mészáros, P. 1998, *Phys. Rev. D*, 58, 123005
- Rodriguez, J., Cadolle Bel, M., Alfonso-Garzón, J., et al. 2015, *A&A*, 581, L9
- Rybicki, G. B., & Lightman, A. P. 1979, *Radiative Processes in Astrophysics* (Wiley)
- Saito, S., Stawarz, L., Tanaka, Y. T., et al. 2015, *ApJ*, 809, 171
- Schlaflly, E. F., & Finkbeiner, D. P. 2011, *ApJ*, 737, 103
- Schmidt, G. D., Elston, R., & Lupie, O. L. 1992, *AJ*, 104, 1563
- Shahbaz, T., Fender, R. P., Watson, C. A., & O'Brien, K. 2008, *ApJ*, 672, 510
- Shahbaz, T., Ringwald, F. A., Bunn, J. C., et al. 1994, *MNRAS*, 271, L10
- Shidatsu, M., Ueda, Y., Tazaki, F., et al. 2011, *PASJ*, 63, 785
- Sikora, M., & Madejski, G. 2000, *ApJ*, 534, 109
- Tanaka, Y. T., Stawarz, L., Finke, J., et al. 2014, *ApJ*, 787, 155
- Tanaka, Y. T., Doi, A., Inoue, Y., et al. 2015, *ApJ*, 799, L18
- Tetarenko, A., Sivakoff, G. R., Young, K., Wouterloot, J. G. A., & Miller-Jones, J. C. 2015, *The Astronomer's Telegram*, 7708, 1
- Trushkin, S. A., Nizhelskij, N. A., & Tsybulev, P. G. 2015a, *The Astronomer's Telegram*, 7716, 1
- Trushkin, S. A., Nizhelskij, N. A., & Tybulev, P. G. 2015b, *The Astronomer's Telegram*, 7667, 1
- Turnshek, D. A., Bohlin, R. C., Williamson, II, R. L., et al. 1990, *AJ*, 99, 1243
- Uehara, T., Toma, K., Kawabata, K. S., et al. 2012, *ApJ*, 752, L6
- Wagner, R. M., Bertram, R., Starrfield, S. G., et al. 1991, *ApJ*, 378, 293
- Wolff, M. J., Nordsieck, K. H., & Nook, M. A. 1996, *AJ*, 111, 856

Table 1

Daily optical and near-infrared polarization degree (PD) and position angle (PA).

| MJD | R-band | | K _s -band | | Instrument |
|-------|------------------------|------------------------|-----------------------|------------------------|----------------------|
| | PD (%) | PA (deg) | PD (%) | PA (deg) | |
| 57190 | 7.85 ± 0.11 (1.34/25) | 6.59 ± 0.35 (1.09/25) | — | — | <i>Pirka</i> /MSI |
| 57191 | 7.72 ± 0.05 (0.62/20) | 6.33 ± 0.22 (1.04/20) | — | — | <i>Pirka</i> /MSI |
| 57192 | 7.76 ± 0.02 (0.51/22) | 6.39 ± 0.10 (0.74/22) | — | — | <i>Pirka</i> /MSI |
| 57193 | 7.77 ± 0.01 (0.74/226) | 6.19 ± 0.03 (0.72/226) | — | — | <i>Pirka</i> /MSI |
| | 8.03 ± 0.06 (0.24/16) | 8.23 ± 0.25 (0.29/16) | 1.43 ± 0.10 (1.45/14) | 9.13 ± 2.18 (1.73/14) | <i>Kanata</i> /HONIR |
| 57194 | 7.96 ± 0.02 (0.58/44) | 7.92 ± 0.07 (0.32/44) | 1.50 ± 0.04 (0.78/24) | 10.36 ± 0.72 (0.69/24) | <i>Kanata</i> /HONIR |

Note. — Shown in the parentheses are corresponding reduced χ^2 and degree of freedom when the observations were fitted with a constant value (i.e., assuming no temporal variation).

Table 2
Model parameters.

| Parameter | Symbol | MJD 57193 | MJD 57194 |
|--|-----------------------|----------------------|----------------------|
| Break frequency [Hz] | ν_{SSA} | 3×10^{14} | 3×10^{14} |
| Magnetic Field [G] | B | 1.4×10^5 | 1.4×10^5 |
| Size of emission region [cm] | R | 5.3×10^8 | 2.0×10^8 |
| Jet velocity [c] | β | 0.9 | 0.9 |
| Electron distribution normalization [electrons] | K | 4.5×10^{40} | 7.0×10^{39} |
| Electron Power-law Index | s | 2.2 | 2.2 |
| Minimum Electron Lorentz Factor | γ_{min} | 1.0 | 1.0 |
| Cutoff Electron Lorentz Factor | γ_{cut} | 10^2 | 10^2 |
| Maximum Electron Lorentz Factor | γ_{max} | 10^6 | 10^6 |
| Synchrotron luminosity [erg s ⁻¹] | L_{sync} | 2.8×10^{37} | 4.3×10^{36} |
| SSC luminosity [erg s ⁻¹] | L_{SSC} | 4.1×10^{37} | 7.2×10^{36} |
| Total radiation luminosity [erg s ⁻¹] | L_{rad} | 6.9×10^{37} | 1.2×10^{37} |
| Jet Power in Magnetic Field [erg s ⁻¹] | L_{B} | 1.9×10^{37} | 5.0×10^{36} |
| Jet Power in Electrons [erg s ⁻¹] | L_{e} | 3.9×10^{36} | 3.2×10^{36} |