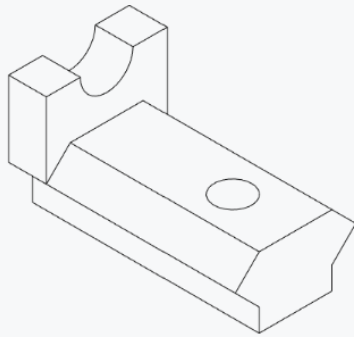


VORON 1 TO VORON TRIDENT

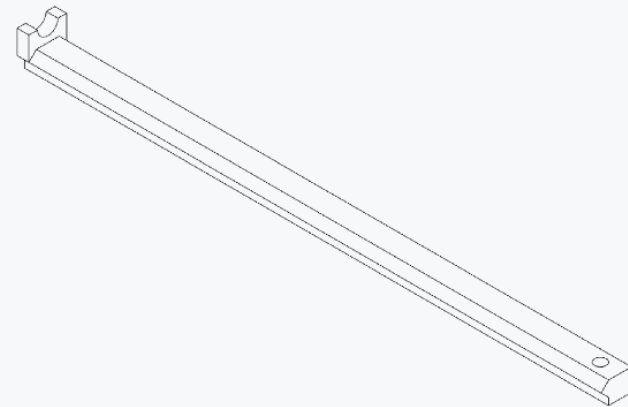
We build space shuttles with gardening tools
so anyone can have a space shuttle of their own.

VERSION 2021-08-29



10MM DRILL GUIDE

For blind joint access holes located at the edge of an extrusion.

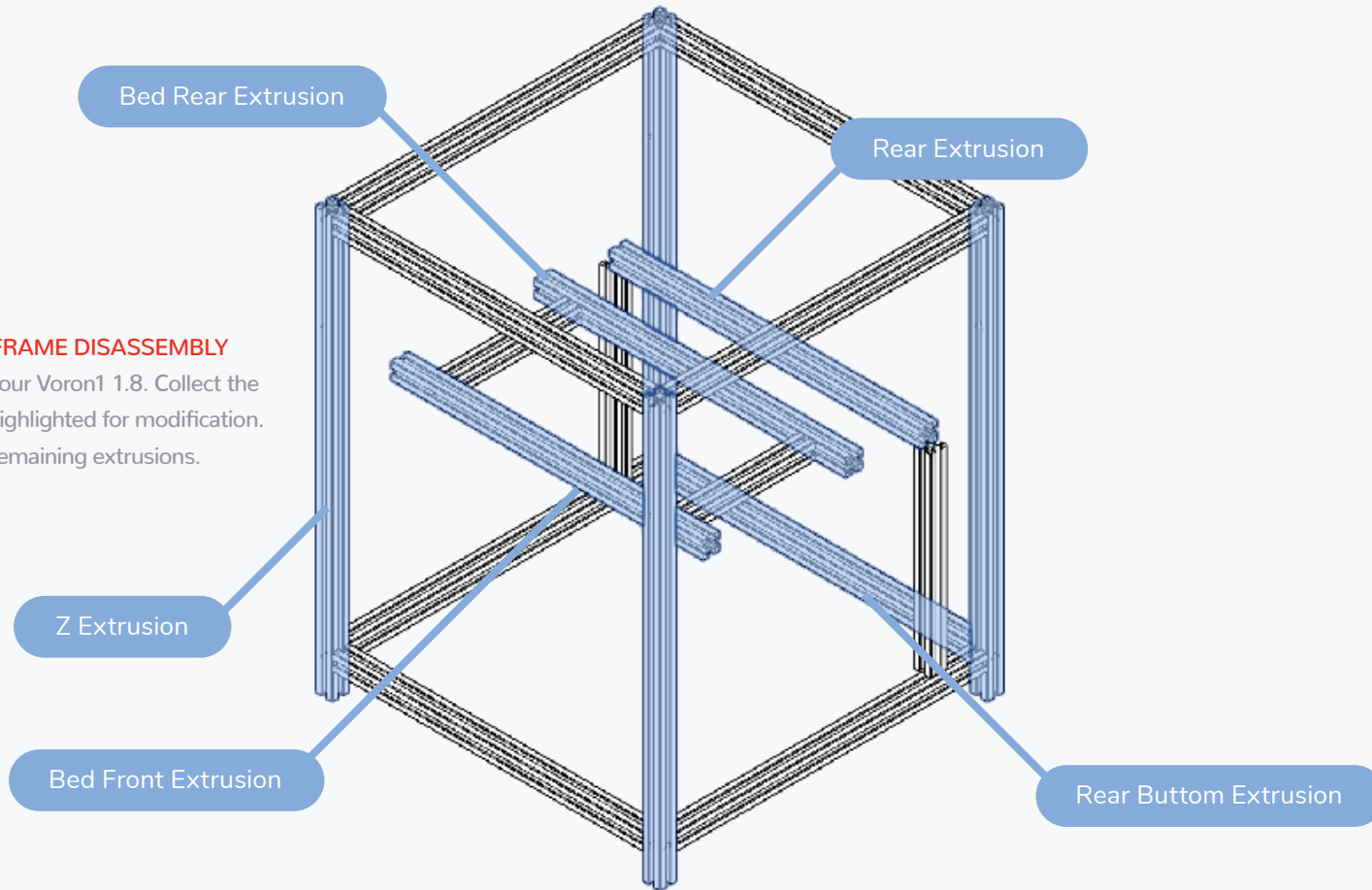


140MM DRILL GUIDE

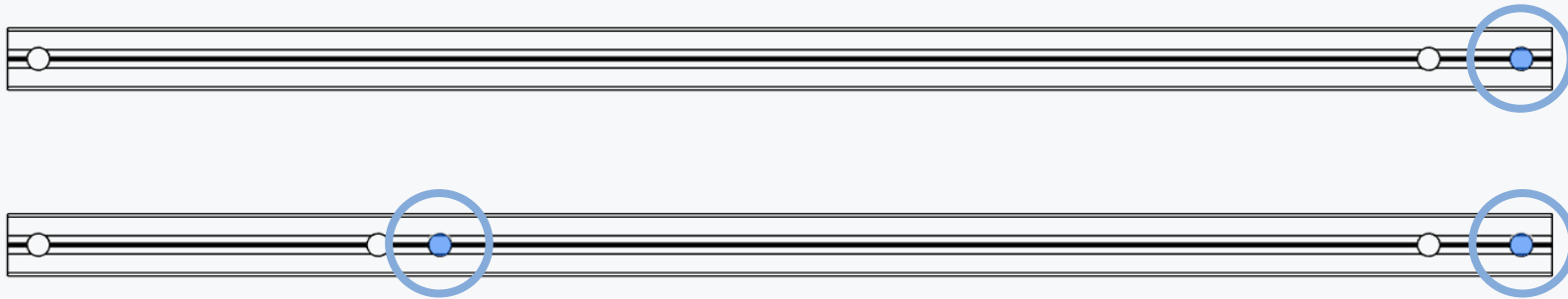
For the Y axis blind joint access holes located on the vertical extrusions.

VORON1 1.8 FRAME DISASSEMBLY

Disassemble your Voron1 1.8. Collect the frame pieces highlighted for modification. Set aside the remaining extrusions.



Z Extrusion

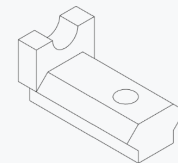
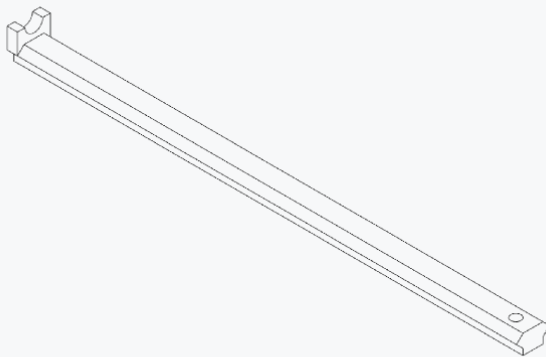


DRILL ACCESS HOLES

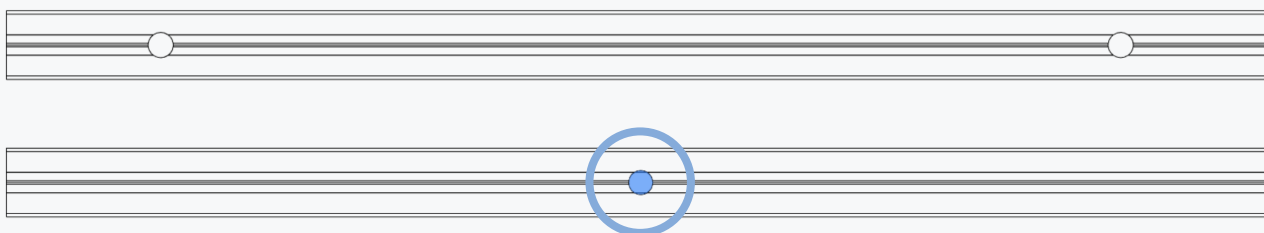
Drill an access hole for the Y axis blind joint 140mm from the left edge of the extrusion.

DRILL ACCESS HOLES

Drill access holes for the blind joint 10mm from the right edge of the extrusion.



Bed Front Extrusion



DRILL ACCESS HOLES

Drill an access hole in the
centre of extrusion.

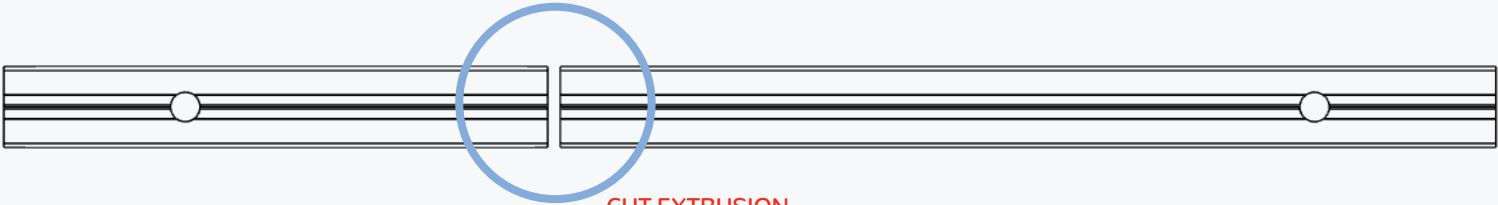
Rear Buttom Extrusion



DRILL ACCESS HOLES

Drill an access hole in the
centre of extrusion.

Bed Rear Extrusion



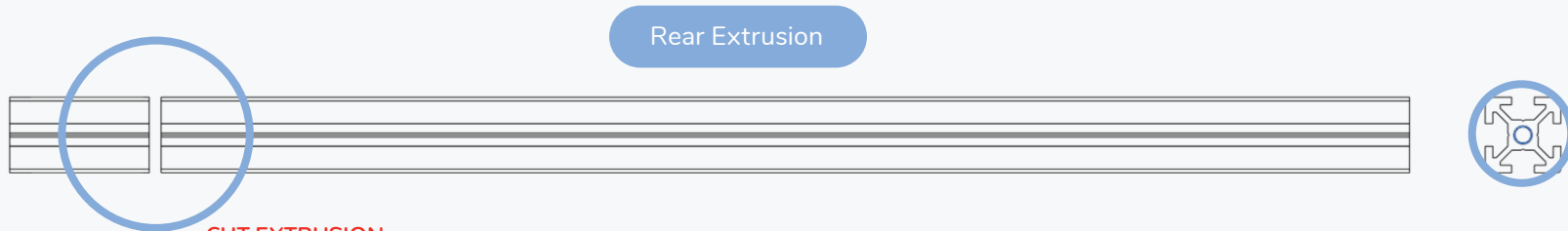
CUT EXTRUSION

The remaining extrusion length is 232mm for a 250mm spec build.

Mark the extrusion 138mm from the left.
Cut to the left of your mark.

TAP M5

Tap the end of the extrusion for a M5 screw.



CUT EXTRUSION

The remaining extrusion length is 330mm for all build sizes.

Mark the extrusion 330mm from the right.
Cut to the left of your mark.

TAP M5

Tap the end of the extrusion for a M5 screw.



Website
www.vorondesign.com

Github
<https://github.com/vorondesign>

Discord
<https://discord.gg/voron>
